

Tree of Life Angels

Yardage Requirements based on 44" wide

51 1/2" x 75 1/2"

Main Print	1 1/2 yards
Black	1 1/8 yards
Stripe	3/8 yard
White	3/4 yard
Turquoise	1/4 yard
Yellow	1/4 yard
Pink	1/4 yard
Border Print *	1 1/3 yards
(*If using directional fabric...	2 1/8 yards)
Binding	1/2 yard
Backing	4 1/2 yards
Batting	60" x 84"

Supplies needed:

Basic sewing supplies; sewing machine; rotary cutter; mat and ruler.

Designed by Betty Ann Standiferd
© 2005 SOUTHWEST DECORATIVES
5711 Carmel Ave NE, Ste. B
ALBUQUERQUE, NM 87113
(505) 821-7400
swd@swdecoratives.com
<http://www.swdecoratives.com>



THIS PATTERN IS NOT SHAREWARE!

All rights reserved. No part of this pattern may be photocopied or reproduced without written consent of Southwest Decoratives. All finished items produced from this pattern are protected by federal copyright laws and may not be reproduced for commercial use in any form without written consent from Southwest Decoratives.

Tree of Life Angels

#110152



This easy All Pieced Pattern makes a
51 1/2" x 75 1/2" Finished Quilt
Designed by Betty Ann Standiferd

CUTTING DIRECTIONS

All strips are cut from salvage to salvage, across the width of the fabric (wof).

From Main Print (Tree of Life Angels) cut:

- 15 angel figures 6 1/2" x 6 1/2"
- From Black fabric cut:
 - 2 strips 3 7/8" x wof, subcut into Sixteen 3 7/8" squares
 - From Stripe fabric cut:
 - 5 strips 2" x wof, subcut into Thirty Two 2" x 6 1/2" strips
 - From White fabric cut:
 - 5 strips 2" x wof, subcut into Twenty Eight 2" x 6 1/2" strips.

From White fabric cut:

- 3 strips 3 7/8" x wof, subcut into Thirty 3 7/8" squares.
- From Black fabric cut:
 - 2 strips 3 7/8" x wof, subcut into Fourteen 3 7/8" squares.

From Turquoise cut:

- 4 strips 2" x wof, subcut into Sixteen 2" x 6 1/2" strips.
- From Yellow cut:
 - 4 strips 2" x wof, subcut into Twenty 2" x 6 1/2" strips.
 - From Pink cut:
 - 4 strips 2" x wof, subcut into Twenty four 2" x 6 1/2" strips.

From Black cut:

- 13 strips 2 1/2" x wof for 1st border and binding.
- From Border Print cut:
 - 8 strips 6" x width of fabric. Piece 4 sets of strips to form 6" x 88" each. Subcut 2 strips 6" x 77" (for the sides) and the remaining 2 strips 6" x 54" (for the top and bottom).

PIECING DIRECTIONS

Sew B Units:

1. Create B units by pairing up the 2" x 6 1/2" rectangles according to the following:
 - 16 Yellow to 16 Stripe fabric
 - 24 Pink to 24 White fabric
 - 16 Turquoise to 16 Stripe fabric
 - 4 Yellow to 4 White fabric

2. Sew together and press seam allowance to one side. Set aside.

Sew C Units:

3. These are 1/2 square triangles. Pair up all 30 Of the White fabric 3 7/8" squares with 30 Black fabric. Pair two 3 7/8" squares right sides together, lightly mark along the diagonal, on lighter fabric with a pencil 1/4" away from center on both sides.

4. Sew on drawn lines. Cut down the center to separate into triangles. Open into squares. Press seams to one side. Each pairing of squares will make two 1/2 square triangles.

Block Assembly:

5. Refer to Fig. 3 for placement of A (6 1/2" Main Print Fabric) B and C units. Lay out each block (refer to pattern cover) Sew the blocks' together working across in rows. Sew a C unit onto each end of two B units. Sew a B unit on two opposite sides of Unit A (6 1/2" square of Main Print). See Figure 1 for layout. Press seams in opposite directions.

6. Sew rows together to yield finished block (Figure 2). Press.
7. Arrange blocks referring to pattern cover. Sew together 3 blocks for each row. Press seam allowances in opposite directions. Sew rows together and press.
8. Sew inner border strips into a continuous length. Measure the width of the quilt. Cut inner border to that length and add to the top and bottom of the quilt.
9. Find the center point along each side of the quilt top and along the length of each outer border strip. With right sides together, pin each border to quilt top matching centers and allowing excess fabric to extend beyond the ends for mitering. Individually attach each of the four borders, leaving corners free. Start and stop stitching 1/4" from corner. Press seams toward border. Miter each corner. Press Again.
10. Layer the quilt top with batting and backing. Quilt as desired. Bind the edges. When placing the binding on, sew a stitch 1/4" away from the border stripe so there is a guide line to place binding on.

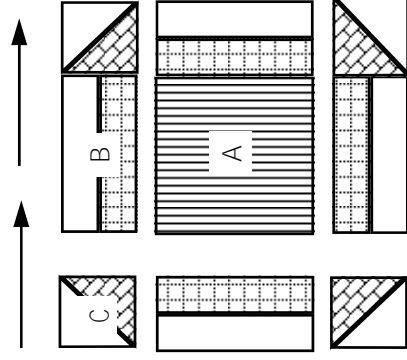


Figure 1

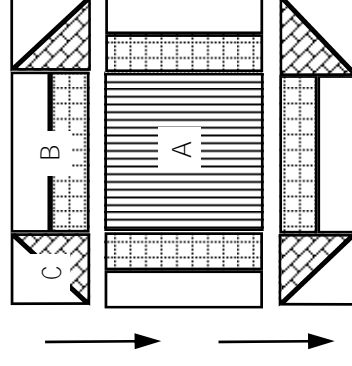


Figure 2

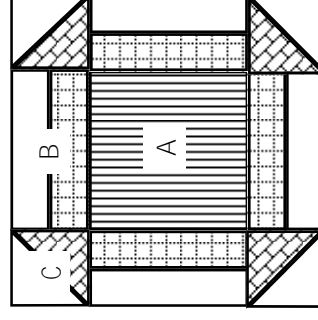


Figure 3